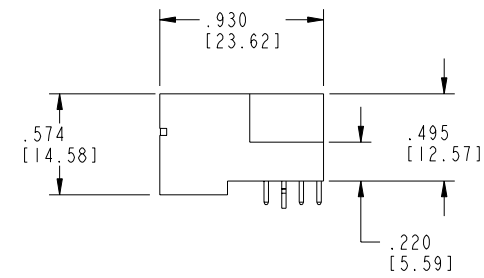
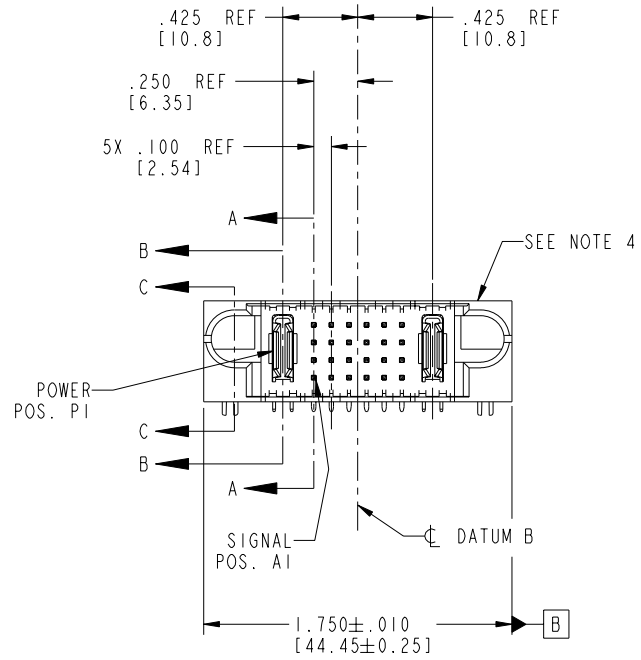


Tous droits strictement réservés. Reproduction ou communication a des tiers interdite sous quelque forme que ce soit sans autorisation écrite du propriétaire. Propriété de c FCI. Droits de reproduction FCI.

All rights strictly reserved. Reproduction or issue to third parties in any form whatever is not permitted without written authority from the proprietor. Property of FCI. Copyright FCI.

PRODUCT NO.	ROWS	PWR		SIGNAL						PWR	
51730-031-- NOTE: ③	DCBA	E1	P1	1	2	3	4	5	6	P2	E2



CODE	DIM "M" MATING LENGTH	CONTACT TYPE
E	.220 [5.59]	SIGNAL
F	.220 [5.59]	SIGNAL
G	.220 [5.59]	SIGNAL
H	.220 [5.59]	SIGNAL
U	.270 [6.86]	SIGNAL
PA	N/A [N/A]	POWER
HA	N/A [N/A]	HOLD-DOWN

mat'l code		SEE NOTE 2		tolerances unless otherwise specified		CUSTOMER	
ltr	ecn no.	dr	date	linear	.XX±.01/0.X±0.3	COPY	
A	V21249	JRW	08/09/01		.XXX±.005/0.XX±0.13	projection	
B	V21291	CGD	09/10/02		.XXX±.002/0.XX±0.051	title	
C	DG05-0319	CS	09/08/05	angles	0°±2°	RIGHT ANGLE SOLDER HEADER	
D	DG05-0560	CS	12/26/05	dr	C. DAILY 09/10/02	product family	
				enr	M. MOSTOLLER 09/10/02	PwrBlade	
				chr	M. MOSTOLLER 09/10/02	code	
				appd	M. MOSTOLLER 09/10/02	213	
sheet index	revision sheet	D	D	D	D	sheet	
		1	2	3	4	1 of 4	

INCH/MM		scale		A	
1:1				51730-031	
				dwg no	
				51730-031	
				sheet	
				1 of 4	

cage code 22526 4

Pro/E

PDM: Rev:D

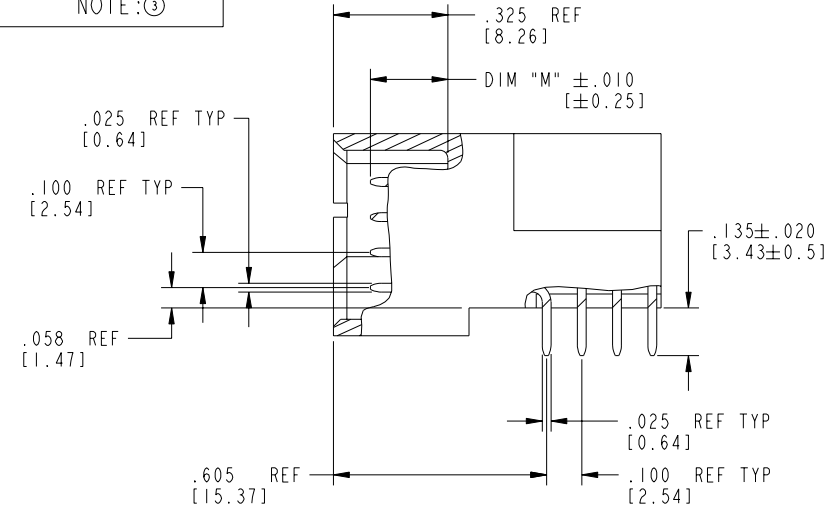
STATUS Released

Printed: Oct 08, 2006

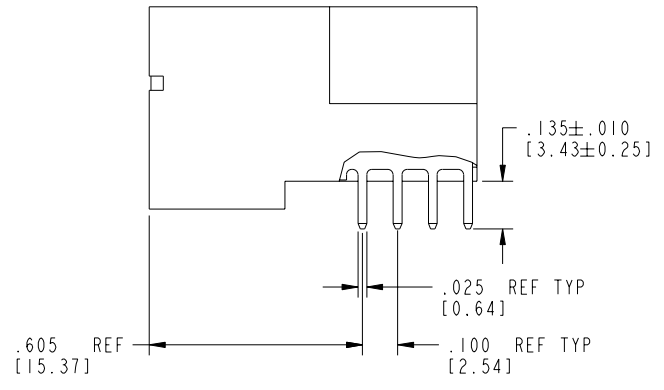
Tous droits strictement réservés. Reproduction ou communication a des tiers interdite sous quelque forme que ce soit sans autorisation écrite du propriétaire. Propriété de c FCI. Droits de reproduction FCI.

All rights strictly reserved. Reproduction or issue to third parties in any form whatever is not permitted without written authority from the proprietor. Property of FCI. Copyright FCI.

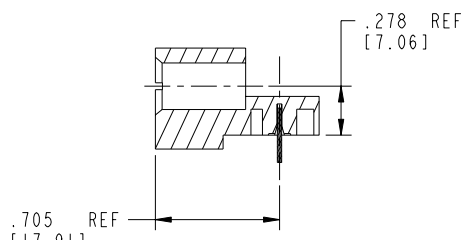
PRODUCT NUMBER
51730-031--
NOTE:③



BROKEN-OUT SECTION A-A
SCALE 2:1



BROKEN-OUT SECTION B-B
SCALE 2:1



SECTION C-C

mat'l code		SEE NOTE 2		tolerances unless otherwise specified		CUSTOMER		 www.fciconnect.com	
ltr	ecn no.	dr	date	linear	.XX±.01/0.X±0.3	COPY		projection	title
D					.XXX±.005/0.XX±0.13				IP + 24S + IP
				angles	.XXX±.0020/0.XXX±0.051				RIGHT ANGLE SOLDER HEADER
				dr	0°±2°				product family
				enrg	C. DAILY 09/10/02			1:1	PwrBlade
				chr	M. MOSTOLLER 09/10/02			A	code
				appd	M. MOSTOLLER 09/10/02				213
sheet index	revision sheet								sheet
									2 of 4

cage code 22526

PDM: Rev:D

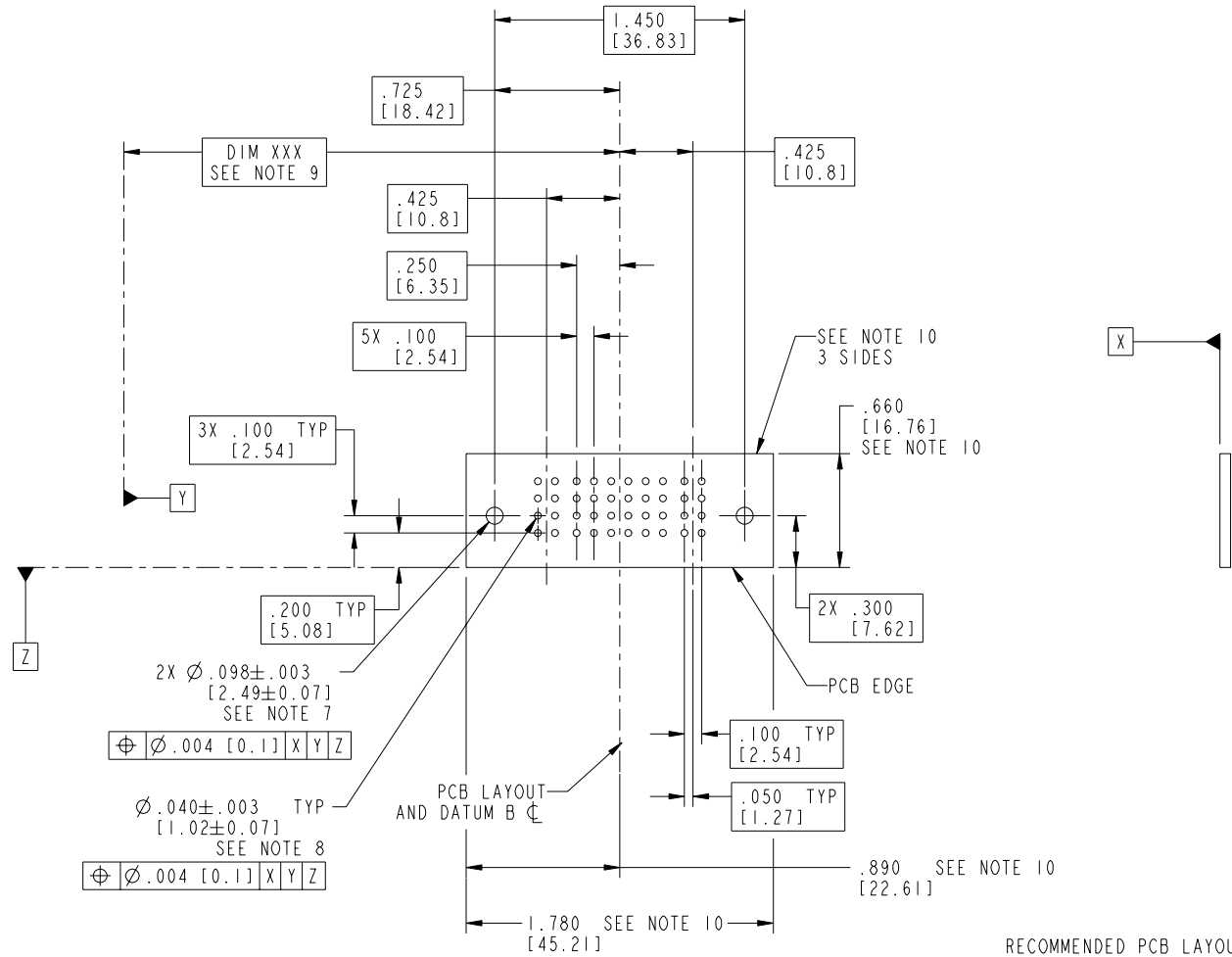
STATUS Released

Printed: Oct 08, 2006

Tous droits strictement réservés. Reproduction ou communication a des tiers interdite sous quelque forme que ce soit sans autorisation écrite du propriétaire. Propriété de c FCI. Droits de reproduction FCI.

All rights strictly reserved. Reproduction or issue to third parties in any form whatever is not permitted without written authority from the proprietor. Property of FCI. Copyright FCI.

PRODUCT NUMBER
51730-031__
NOTE: ③



RECOMMENDED PCB LAYOUT

mat'l code		SEE NOTE 2		tolerances unless otherwise specified		CUSTOMER		 www.fciconnect.com	
ltr	ecn no.	dr	date	linear	.XX±.01/0.X±0.3	COPY		projection	title
D					.XXX±.005/0.XX±0.13				IP + 24S + IP
				angles	.XXX±.0020/0.XX±0.051				RIGHT ANGLE SOLDER HEADER
				dr	0°±2°				
				enrg	C. DAILY 09/10/02	INCH/MM		product family	PwrBlade
				chr	M. MOSTOLLER 09/10/02	scale		size	213
				appd	M. MOSTOLLER 09/10/02	1:1		dwg no	51730-031
sheet index	revision sheet							code	3 of 4

cage code 22526

Pro/E

PDM: Rev:D

STATUS Released

Printed: Oct 08, 2006

Tous droits strictement réservés. Reproduction ou communication a des tiers interdite sous quelque forme que ce soit sans autorisation écrite du propriétaire. Propriété de c FCI. Droits de reproduction FCI.

All rights strictly reserved. Reproduction or issue to third parties in any form whatever is not permitted without written authority from the proprietor. Property of FCI. Copyright FCI.

PRODUCT NUMBER
51730-031__
NOTE:③

NOTES:

1. DIMENSIONS AND TOLERANCES ARE IN ACCORDANCE WITH ASME Y14.5M, 1994 UNLESS OTHERWISE SPECIFIED.

CONNECTOR NOTES:

② HOUSING MATERIAL: UL 94 V-0 GLASS FILLED HIGH-TEMP THERMOPLASTIC
POWER CONTACT MATERIAL: COPPER ALLOY
SIGNAL PIN MATERIAL: COPPER ALLOY

3. PLATING:

51730-031,51730-031LF,PLATING SPEC SEE PRINT:100064183.

④ MANUFACTURER'S NAME, P/N, AND DATE CODE TO APPEAR ON THIS SURFACE.

5. PRODUCT SPECIFICATION GS-12-149.
APPLICATION SPECIFICATION BUS-20-067.


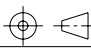

PCB NOTES:

6. ALL HOLE DIAMETERS ARE FINISHED HOLE SIZE.
7. MOUNTING HOLES, WHERE APPLICABLE, ARE UNPLATED.

⑧ $\varnothing .0453 \pm .0010$ [1.151 \pm 0.025] DRILLED HOLES PLATED WITH .0003 [0.008] MIN SnPb OVER .001 [0.03] TO .003 [0.08] Cu PLATING TO ACHIEVE $\varnothing .040 \pm .003$ [1.02 \pm .07] HOLE.

⑨ "DIM XXX" TO BE DETERMINED BY THE CUSTOMER.

⑩ CONNECTOR KEEP-OUT ZONE.

mat'l code				SEE NOTE 2		tolerances unless otherwise specified		CUSTOMER		 www.fciconnect.com	
ltr	ecn no.	dr	date	linear	.XX±.01/0.XX±0.3	COPY		projection		title	
D					.XXX±.005/0.XX±0.13					IP + 24S + IP	
				angles	XXXX±.0020/0.XXX±0.051					RIGHT ANGLE SOLDER HEADER	
				dr	0°±2°	C. DAILY 09/10/02		INCH/MM		product family PwrBlade code	
				enrg		M. MOSTOLLER 09/10/02		1:1		size dwg no 213	
				chr		M. MOSTOLLER 09/10/02		A		sheet 4 of 4	
				appd		M. MOSTOLLER 09/10/02		51730-031			
sheet index	revision sheet										

cage code 22526 4

PDM: Rev:D

STATUS Released

Printed: Oct 08, 2006